

12.5" FRONT PANEL

3" GUSSET

12.5" FRONT PANEL

SIDE SEAL

12"

TEAR HERE TO OPEN



**BAIT STATIONS**

**PRECAUTIONARY STATEMENTS  
HAZARDS TO HUMANS AND DOMESTIC ANIMALS  
CAUTION**

Wash thoroughly with soap and water after handling bait stations.

**DIRECTIONS FOR USE**

It is a violation of Federal law to use this product in a manner inconsistent with its labeling. This product is specially designed for control of small cockroaches, such as German and Brown Banded roaches, in any area where they are a problem, such as residential, warehousing and commercial establishments, including food service, food manufacturing and food processing facilities, hospitals, schools, daycare centers, nursing homes, health care facilities, laboratories, computer and electronic equipment facilities, pet shops, zoos, basements, buses, boats, trains, and aircraft.

The transparent red top enables you to monitor bait consumption while providing roaches their preferred environment, darkness, because roaches do not see light in the red spectrum. This product is an odorless bait that roaches eat even in the presence of other foods and is packaged in a child-resistant bait station.

This product may also be used to kill exposed, adult stages of beetles: cigarette beetle, confused flour beetle, dermestid, drugstore beetle, flat grain beetle, granary weevil, lesser grain borer, lesser mealworm, mealworm, merchant grain beetle, red flour beetle, rice weevil, rusty grain beetle, saw-toothed grain beetle, spider beetle, or warehouse beetle.

- Place bait stations in areas where cockroaches have been seen and where they hide. Cockroaches infest dark, warm, damp locations.
  - The bait stations can be stuck to a vertical surface by peeling off the protective strip to expose adhesive.
  - For effective roach control use 4 - 6 bait stations per 100 sq. ft. of horizontal surface area. Place adjacent to walls and flush in corners. Do not place more than 24 bait stations per residence. For outdoor use, place stations adjacent to structure.
  - Do not spray the bait stations. Avoid placing the bait stations on freshly sprayed surfaces.
  - Roaches will begin eating the bait immediately and you should expect to see fewer roaches within 3 days.
  - Inspect all bait stations and replace as needed for continual control of roaches.
- For Pantry Pests:**
- Remove and dispose of infested foodstuffs. Clean up spilled foodstuffs from cupboard or food storage area.
  - This product will kill adult stages of beetles remaining in food storage areas. Once feeding on bait begins, most adult beetles will be killed within 7 days.
  - Use 4 - 6 bait stations per 100 sq. ft. of horizontal surface area. Place adjacent to voids or cracks and crevice, behind and under cupboards, and near locations where infested foodstuffs were discovered.
  - Bait stations can be stuck to a vertical surface by peeling off the protective strip to expose adhesive.
  - Do not place more than 24 bait stations per residence.

**STORAGE AND DISPOSAL:**

Do not contaminate water, food, or feed by storage or disposal.

**PESTICIDE STORAGE:** Store in a cool, dry area out of reach of children.

**PESTICIDE DISPOSAL:** Wrap bait stations in several layers of newspaper and discard in trash.

**IMPORTANT: READ BEFORE USE**

Read the entire Directions for Use, Conditions, Disclaimer of Warranties and Limitations of Liability before using this product. If terms are not acceptable, return the unopened product container at once. By using this product, user or buyer accepts the following Conditions, Disclaimer of Warranties and Limitations of Liability.

**CONDITIONS:** The directions for use of this product are believed to be adequate and must be followed carefully. However, it is impossible to eliminate all risks associated with the use of this product. Crop injury, ineffectiveness or other unintended consequences may result because of such factors as weather conditions, season of other materials, or the manner of use or application, all of which are beyond the control of Bayer CropScience LP. All bait stations shall be used in accordance with the label on the Bayer CropScience LP bait stations.

**DISCLAIMER OF WARRANTIES:** TO THE EXTENT CONSISTENT WITH APPLICABLE LAW, BAYER CROPS SCIENCE LP MAKES NO OTHER WARRANTIES, EXPRESS OR IMPLIED, OF MERCHANTABILITY OR OF FITNESS FOR A PARTICULAR PURPOSE OR OTHERWISE, THAT EXTEND BEYOND THE STATEMENTS MADE ON THIS LABEL. No agent of Bayer CropScience LP is authorized to make any warranties beyond those contained herein or to modify the warranties contained herein. TO THE EXTENT CONSISTENT WITH APPLICABLE LAW, BAYER CROPS SCIENCE LP DISCLAIMS ANY LIABILITY WHATSOEVER FOR SPECIAL, INCIDENTAL OR CONSEQUENTIAL DAMAGES RESULTING FROM THE USE OR HANDLING OF THIS PRODUCT.

**LIMITATIONS OF LIABILITY:** TO THE EXTENT CONSISTENT WITH APPLICABLE LAW, THE EXCLUSIVE REMEDY OF THE USER OR BUYER FOR ANY AND ALL LOSSES, INJURIES OR DAMAGES RESULTING FROM THE USE OR HANDLING OF THIS PRODUCT, WHETHER IN CONTRACT, WARRANTY, TORT, NEGLIGENCE, STRICT LIABILITY OR OTHERWISE, SHALL NOT EXCEED THE PURCHASE PRICE PAID, OR AT BAYER CROPS SCIENCE LP'S ELECTION, THE REPLACEMENT OF PRODUCT.

Bayer (reg'd), the Bayer Cross (reg'd) and Maxforce® are registered trademarks of Bayer.



**Bayer**

Produced for:  
Bayer Environmental Science  
A Division of Bayer CropScience LP  
2 T. W. Alexander Drive  
Research Triangle Park, NC 27709  
Product of China



Contents:  
**72 Child-Resistant Bait Stations**  
Net Weight:  
**0.05 Oz (1.5 g) per unit**  
Total Net Weight:  
**3.8 Oz (108.0g)**  
80221541 80213034B 140410AAV1

Starts killing roaches in hours  
Child resistant bait stations  
Ideal for kitchen use  
No vapor, no fumes, no mess  
Kills roaches by contact or ingestion  
Virtually eliminates roaches

<b>FIRST AID</b>	
If on skin or clothing:	• Take off contaminated clothing. • Rinse skin immediately with plenty of water for 15-20 minutes. • Call a poison control center or doctor for treatment advice.
<b>HOT LINE NUMBER</b>	
Have the product container or label with you when calling a poison control center or doctor or going for treatment. You may also contact 1-800-334-7577 for emergency medical treatment information.	

EPA Reg. No. 432-1257  
**KEEP OUT OF REACH OF CHILDREN.  
CAUTION**  
EPA Est. No. 071106-GA-003  
\*CAS NO. 120068-37-3  
EPA Reg. No. 432-1257

**FOR USE IN COMMERCIAL, INDUSTRIAL AND RESIDENTIAL AREAS**

**ACTIVE INGREDIENT:**

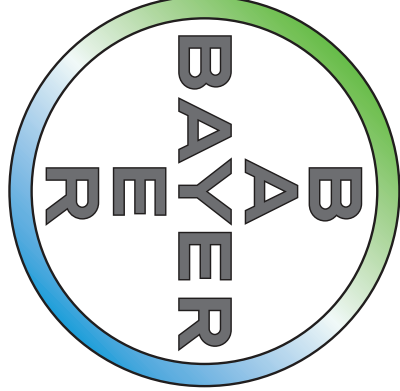
Fipronil\*, (5-Amino-1-(2,6-dichloro-4-trifluoromethyl) phenyl)-4-

(1-R,S)-(trifluoromethyl) sulfinyl)-1H-pyrazole-3-carbonitrile]..... 0.05%

OTHER INGREDIENTS..... 99.95%

TOTAL: 100.00%

**BAIT STATIONS**



**Maxforce**  
**FC ROACH KILLER**

**SINGLES IN A RESEALABLE BAG**

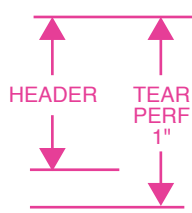
HEADER  
TEAR PERFORM  
ZIPPER WIDE 1.58"

SIDE SEAL

12"

E SEAL

SIDE SEAL



# SINGLES IN A RESEALABLE BAG



# Maxforce<sup>®</sup>

## FC ROACH KILLER

## BAIT STATIONS

FOR USE IN COMMERCIAL, INDUSTRIAL AND RESIDENTIAL AREAS

**ACTIVE INGREDIENT:**

Fipronil\*: [5-Amino-1-(2, 6-dichloro-4-trifluoromethyl) phenyl)-4-(1, R, S)-(trifluoromethyl) sulfinyl)-1H-pyrazole-3-carbonitrile]..... 0.05%

OTHER INGREDIENTS:..... 99.95%

TOTAL: 100.00%

\*CAS NO. 120068-37-3

EPA Reg. No. 432-1257

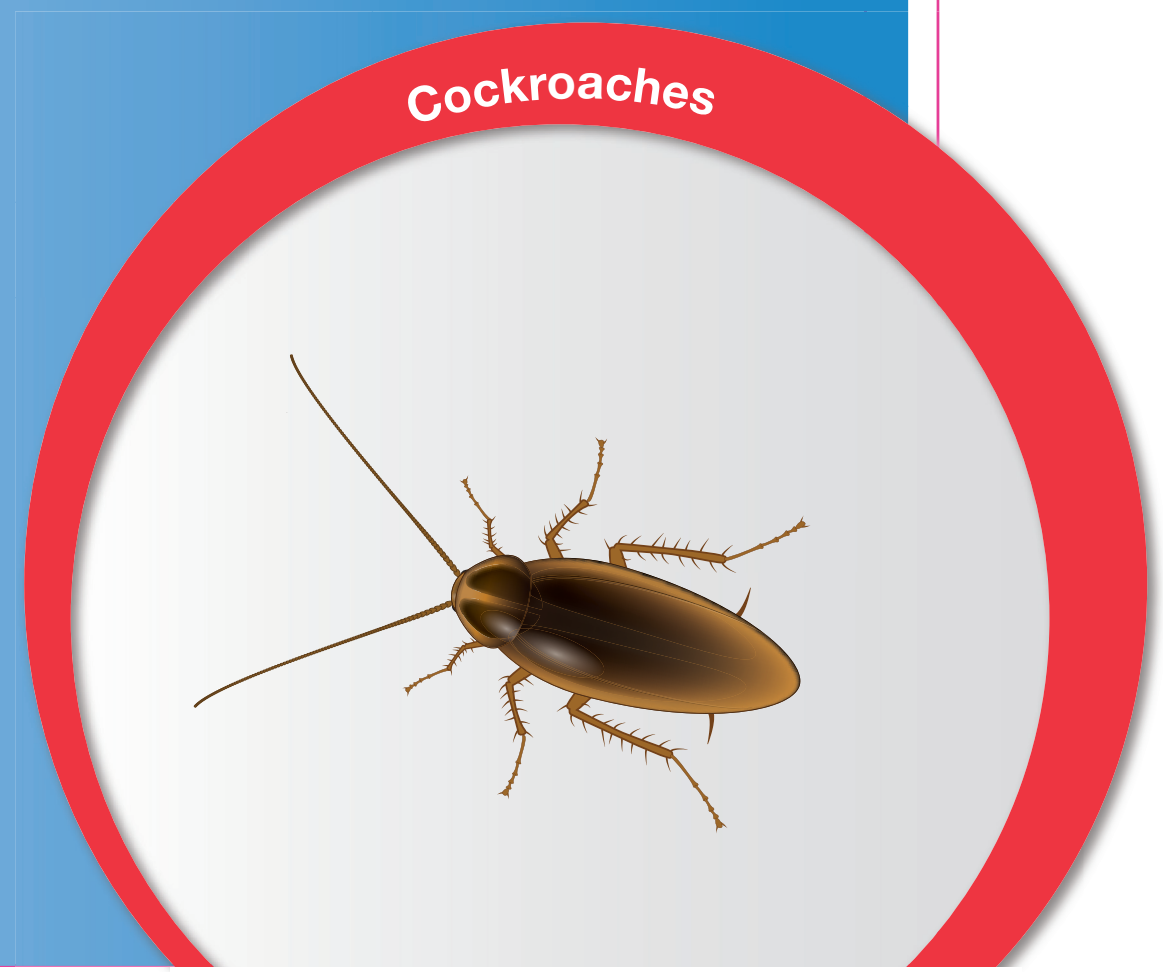
EPA Est. No. 071106-GA-003

KEEP OUT OF REACH OF CHILDREN.  
**CAUTION**

FIRST AID	
If on skin or clothing:	<ul style="list-style-type: none"> <li>• Take off contaminated clothing.</li> <li>• Rinse skin immediately with plenty of water for 15-20 minutes.</li> <li>• Call a poison control center or doctor for treatment advice.</li> </ul>
HOT LINE NUMBER	
Have the product container or label with you when calling a poison control center or doctor or going for treatment. You may also contact 1-800-334-7577 for emergency medical treatment information.	

- Starts killing roaches in hours
- Child resistant bait stations
- Ideal for kitchen use
- No vapor, no fumes, no mess
- Kills roaches by contact or ingestion
- Virtually eliminates roaches

Contents:  
**72 Child-Resistant Bait Stations**  
 Net Weight:  
**0.05 Oz (1.5 g) per unit**  
 Total Net Weight:  
**3.8 Oz (108.0g)**  
 80221541 80213034B 140410AV1



12.5" FRONT PANEL

TEAR HERE TO OPEN 



# Maxforce<sup>®</sup>

## FC ROACH KILLER

### BAIT STATIONS

#### PRECAUTIONARY STATEMENTS

#### HAZARDS TO HUMANS AND DOMESTIC ANIMALS

#### CAUTION

Wash thoroughly with soap and water after handling bait stations.

#### DIRECTIONS FOR USE

**It is a violation of Federal law to use this product in a manner inconsistent with its labeling.**

This product is specially designed for control of small cockroaches, such as German and Brown Banded roaches, in any area where they are a problem, such as residential, warehousing and commercial establishments, including food service, food manufacturing and food processing facilities, hospitals, schools, daycare centers, nursing homes, health care facilities, laboratories, computer and electronic equipment facilities, pet shops, zoos, basements, buses, boats, trains, and aircraft.

The transparent red top enables you to monitor bait consumption while providing roaches their preferred environment, darkness, because roaches do not see light in the red spectrum. This product is an odorless bait that roaches eat even in the presence of other foods and is packaged in a child-resistant bait station.

This product may also be used to kill exposed, adult stages of beetles: cadelle, cigarette beetle, confused flour beetle, dermestid, drugstore beetle, flat grain beetle, granary weevil, lesser grain borer, lesser mealworm, mealworm, merchant grain beetle, red flour beetle, rice weevil, rusty grain beetle, saw-toothed grain beetle, spider beetle, or warehouse beetle.

1. Place bait stations in areas where cockroaches have been seen and where they hide. Cockroaches infest dark, warm, damp locations.
2. The bait stations can be stuck to a vertical surface by peeling off the protective strip to expose adhesive.
3. For effective roach control use 4 - 6 bait stations per 100 sq ft of horizontal surface area. Place adjacent to walls and flush in corners. Do not place more than 24 bait stations per residence. For outdoor use, place stations adjacent to structure.
4. Do not spray the bait stations. Avoid placing the bait stations on freshly sprayed surfaces.
5. Roaches will begin eating the bait immediately and you should expect to see fewer roaches within 3 days.
6. Inspect all bait stations and replace as needed for continual control of roaches.

#### For Pantry Pests:

1. Remove and dispose of infested foodstuffs. Clean up spilled foodstuffs from cupboard or food storage area.
2. This product will kill adult stages of beetles remaining in food storage areas. Once feeding on bait begins, most adult beetles will be killed within 7 days.
3. Use 4 - 6 bait stations per 100 sq ft of horizontal surface area. Place adjacent to voids or cracks and crevice, behind and under cupboards, and near locations where infested foodstuffs were discovered.
4. Bait stations can be stuck to a vertical surface by peeling off the protective strip to expose adhesive.
5. Do not place more than 24 bait stations per residence.

#### STORAGE AND DISPOSAL:

Do not contaminate water, food, or feed by storage or disposal.

**PESTICIDE STORAGE:** Store in a cool, dry area out of reach of children.

**PESTICIDE DISPOSAL:** Wrap bait stations in several layers of newspaper and discard in trash.

#### IMPORTANT: READ BEFORE USE

Read the entire Directions for Use, Conditions, Disclaimer of Warranties and Limitations of Liability before using this product. If terms are not acceptable, return the unopened product container at once. By using this product, user or buyer accepts the following Conditions, Disclaimer of Warranties and Limitations of Liability.

**CONDITIONS:** The directions for use of this product are believed to be adequate and must be followed carefully. However, it is impossible to eliminate all risks associated with the use of this product. Crop injury, ineffectiveness or other unintended consequences may result because of such factors as weather conditions, presence of other materials, or the manner of use or application, all of which are beyond the control of Bayer CropScience LP. All such risks shall be assumed by the user or buyer.

**DISCLAIMER OF WARRANTIES:** TO THE EXTENT CONSISTENT WITH APPLICABLE LAW, BAYER CROPSCIENCE LP MAKES NO OTHER WARRANTIES, EXPRESS OR IMPLIED, OF MERCHANTABILITY OR OF FITNESS FOR A PARTICULAR PURPOSE OR OTHERWISE, THAT EXTEND BEYOND THE STATEMENTS MADE ON THIS LABEL. No agent of Bayer CropScience LP is authorized to make any warranties beyond those contained herein or to modify the warranties contained herein. TO THE EXTENT CONSISTENT WITH APPLICABLE LAW, BAYER CROPSCIENCE LP DISCLAIMS ANY LIABILITY WHATSOEVER FOR SPECIAL, INCIDENTAL OR CONSEQUENTIAL DAMAGES RESULTING FROM THE USE OR HANDLING OF THIS PRODUCT.

**LIMITATIONS OF LIABILITY:** TO THE EXTENT CONSISTENT WITH APPLICABLE LAW, THE EXCLUSIVE REMEDY OF THE USER OR BUYER FOR ANY AND ALL LOSSES, INJURIES OR DAMAGES RESULTING FROM THE USE OR HANDLING OF THIS PRODUCT, WHETHER IN CONTRACT, WARRANTY, TORT, NEGLIGENCE, STRICT LIABILITY OR OTHERWISE, SHALL NOT EXCEED THE PURCHASE PRICE PAID, OR AT BAYER CROPSCIENCE LP'S ELECTION, THE REPLACEMENT OF PRODUCT.

Bayer (reg'd), the Bayer Cross (reg'd) and Maxforce<sup>®</sup> are registered trademarks of Bayer.



Bayer

Produced for:  
Bayer Environmental Science  
A Division of Bayer CropScience LP  
2 T. W. Alexander Drive  
Research Triangle Park, NC 27709  
Product of China

12.5" FRONT PANEL

